

Location Plan For Dura City



Palestine Polytechnic University
College of Engineering and Technology

Legend

- Dora Municipality
- Dora
- West Bank

Project Title :
Design Of Waste Wate Collection System For Dora City

Created by :
Mohammed Jebreen
Noor Yassir Dodin

Project Supervisor :
Eng . Samah Al-Jabari

Coordinate System :Palestine_1923_Palestine_Grid
Projection: Cassini

Linear Unit: Meter
Data Source : Dora Municipality

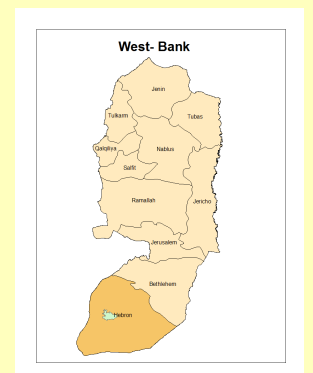
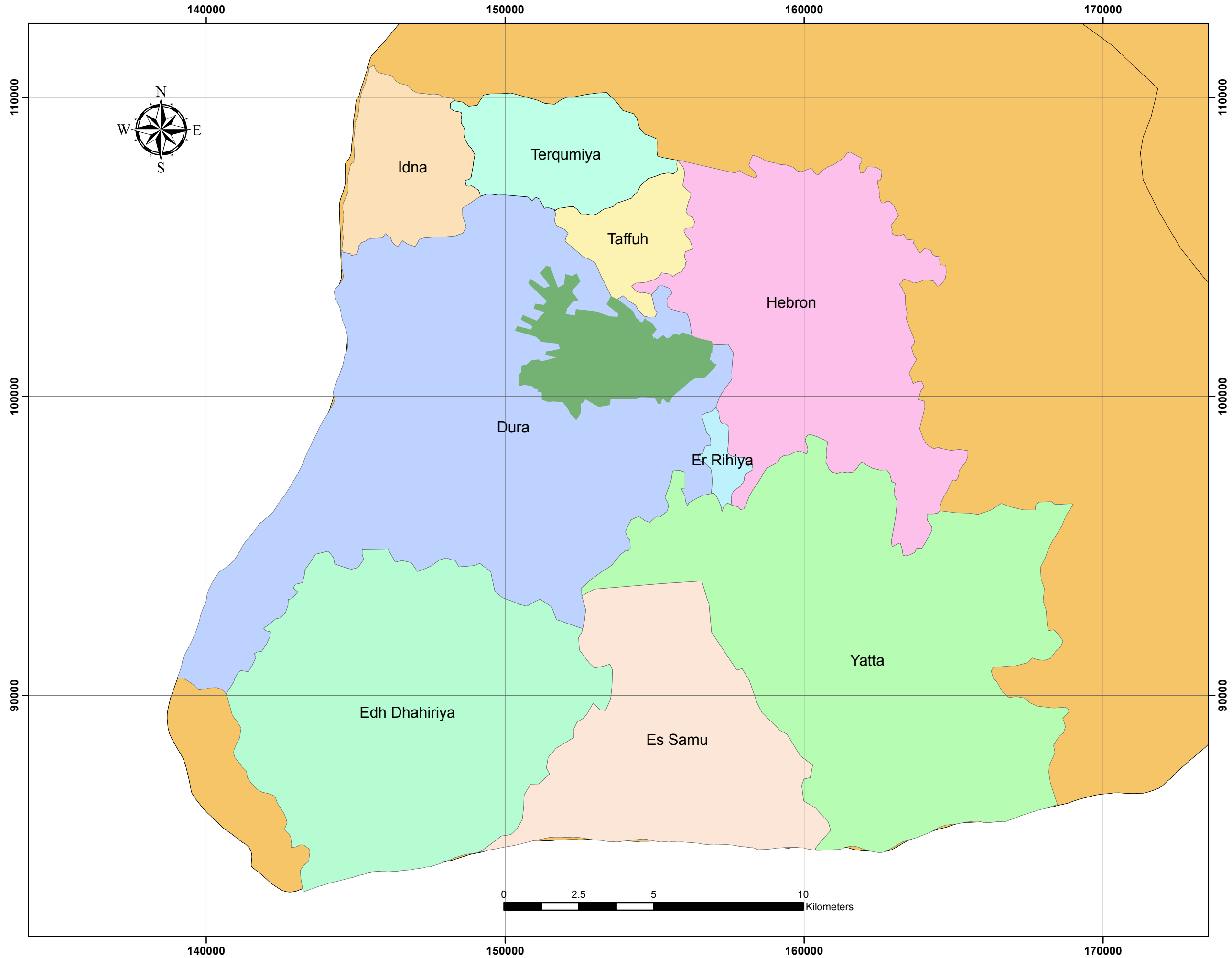


Figure Number (2.1)



Location Of Dora City Respect To Other Cities



Palestine Polytechnic University
College of Engineering and
Technology

Legend

- Dura Municipality
- West Bank

Project Title :
Design Of Waste Wate Collection
System For Dora City

Created by :

Mohammed Jebreen
Noor Yassir Dodin

Project Supervisor :
Eng . Samah Al-Jabari

Coordinate System :Palestine_1923_Palestine_Grid

Linear Unit: Meter
Data Source : Dora Municipality

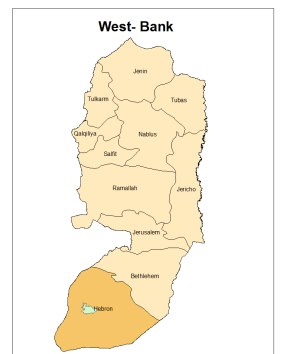


Figure Number (2.2)

Topographic Map For Dora City



Palestine Polytechnic University
College of Engineering and
Technology

Elevation

	455 - 560
	561 - 665
	666 - 770
	771 - 876
	877 - 981

	Raods
	Buildings
	Boundary of City

Project Title :
Design Of Waste Wate Collection
System For Dora City

Created by :
Mohammed Jebreen
Noor Yassir Dodin

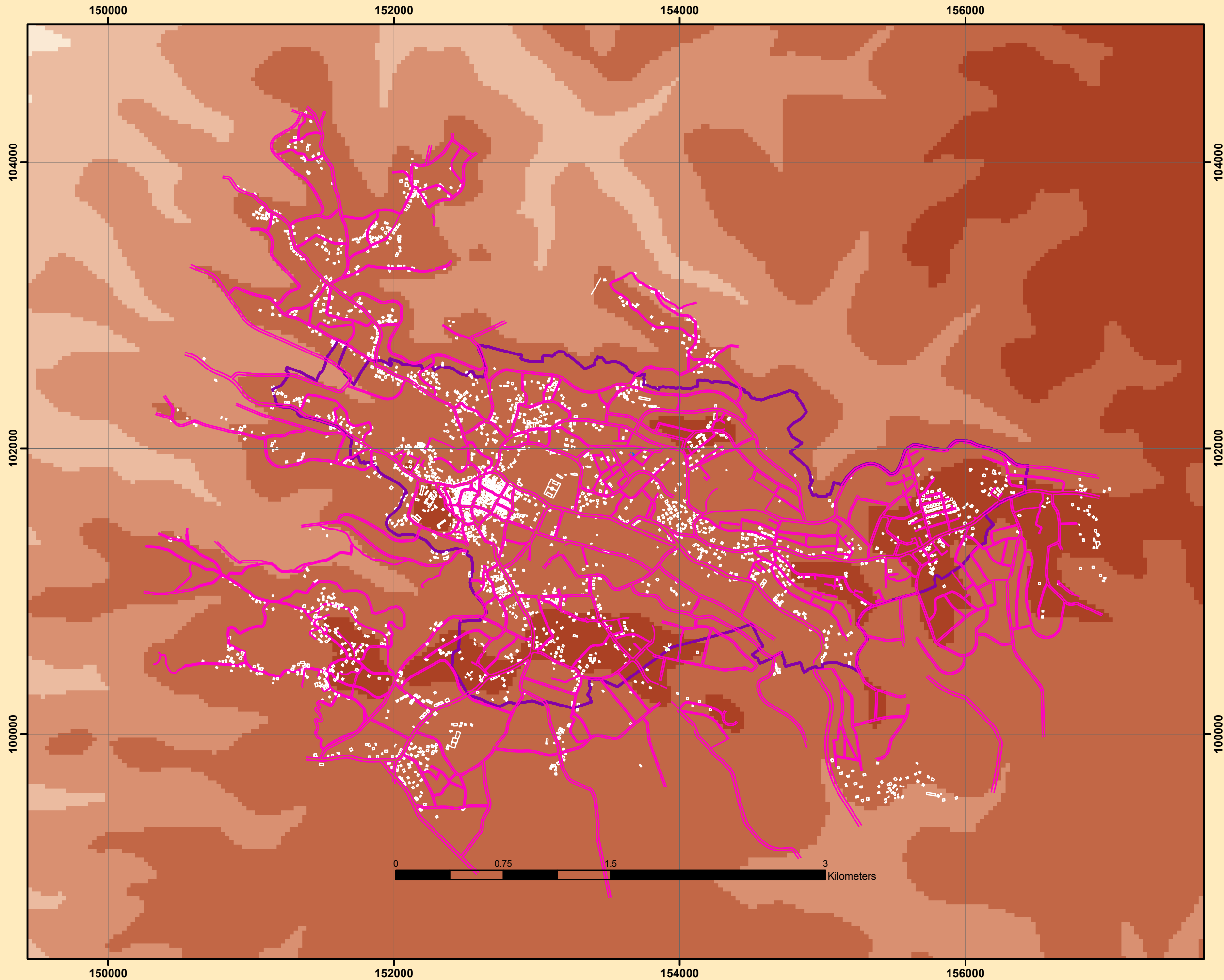
Project Supervisor :
Eng . Samah Al-Jabari

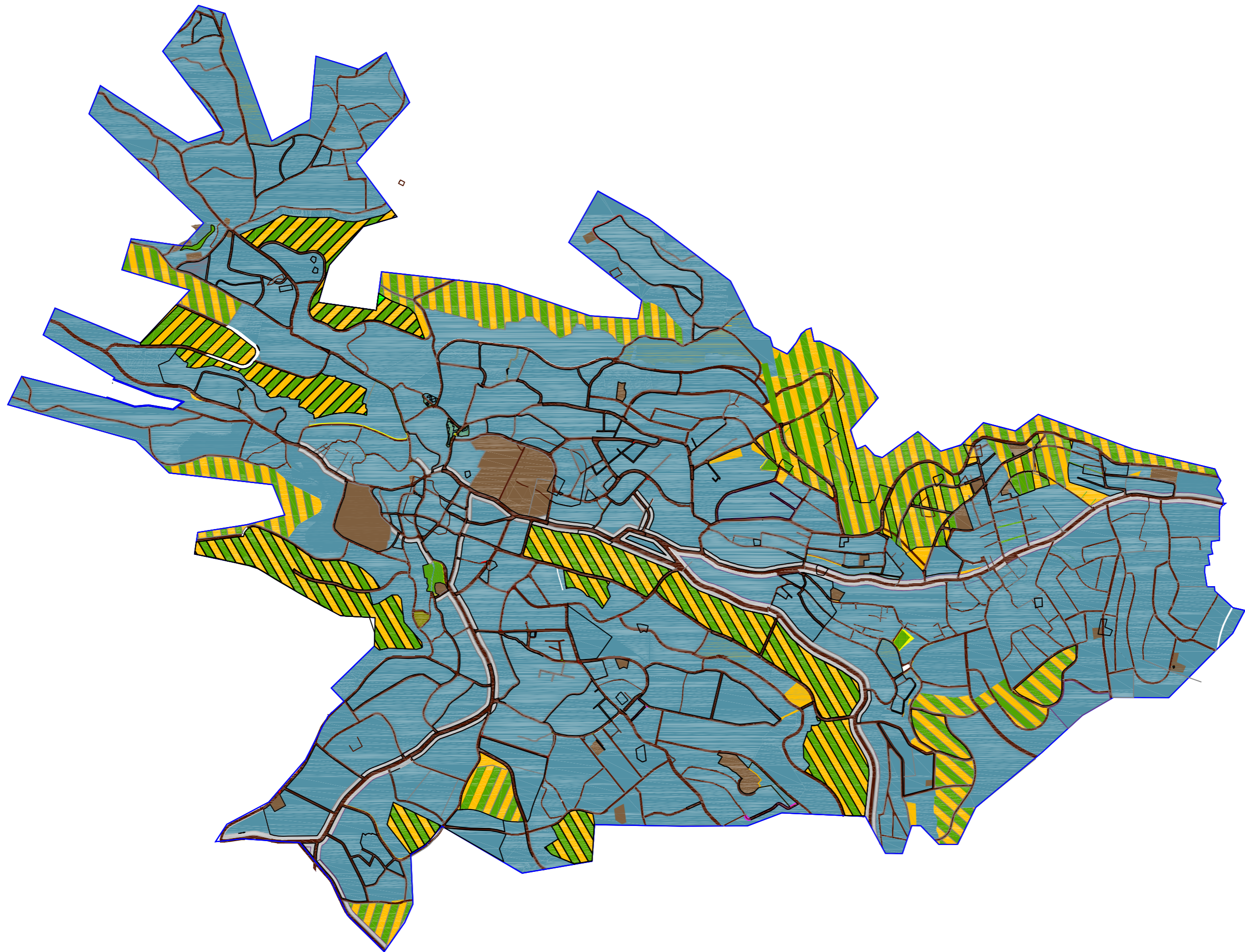
Coordinate System :Palestine_1923_Palestine_Grid
Projection: Cassini

Linear Unit: Meter
Data Source : Dora Municipality



Figure Number (2.3)





Palestine Polytechnic University



Civil.&Arch.Eng.Department



North

Legend And Abbreviations:

Raods	
Public Area	
Residential Area	
Cemetery Area	
Agriculture Area	
Commerical Area	

Project Title:
Design Of Wastewater Collection
System For Dura City

Drawing Title :
Land Use Map

Project Team:
Mohammed Jebreen
Noor Yassir Dodin

Project Supervisor :
Eng , Samah Al-Jabari

Figure Number:
Fig 2.4

Scale to fit

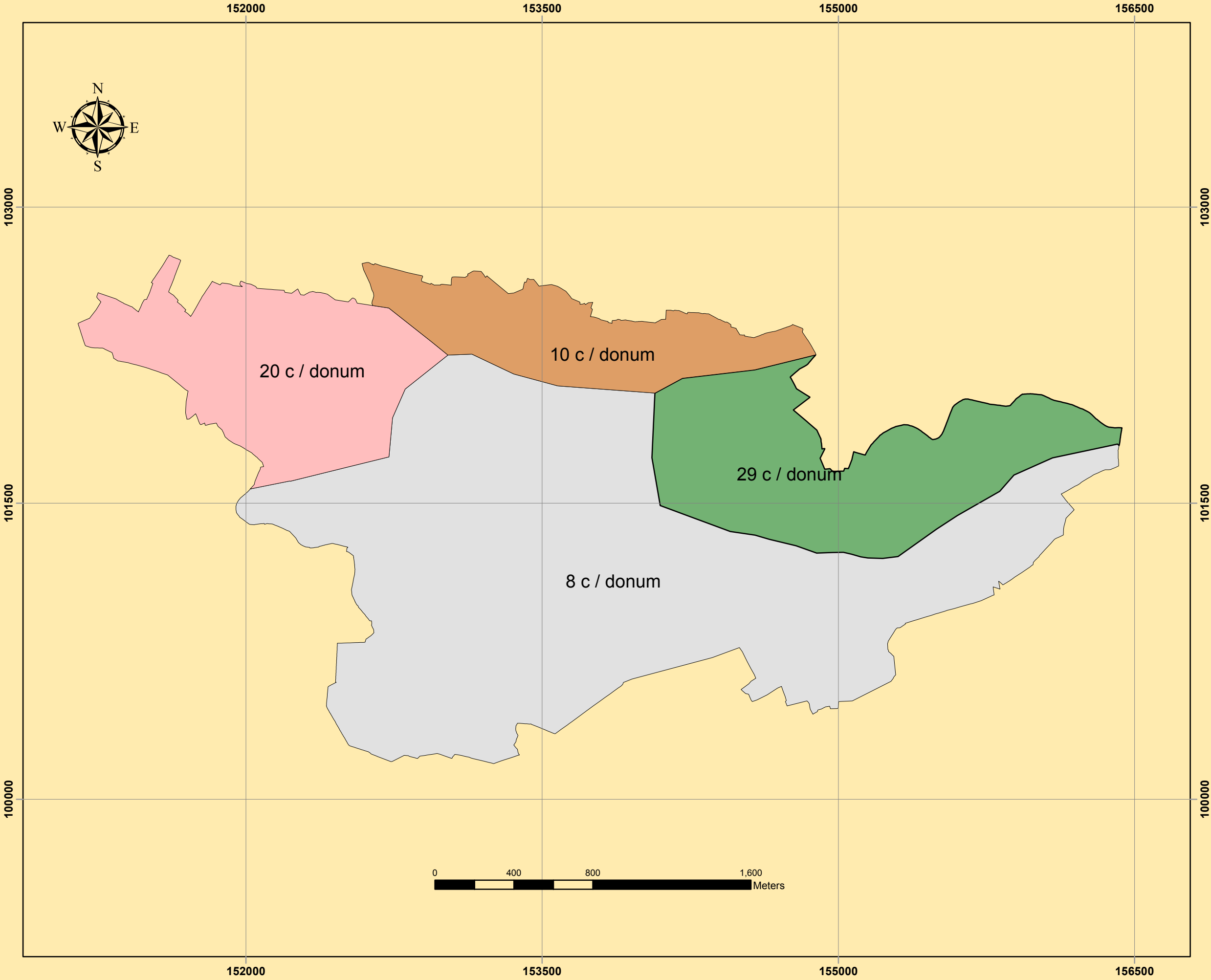
Page Number:

10

Population Density forf Dora City



Palestine Polytechnic University
College of Engineering and
Technology



For year 2039

- Population Density = 10 c / donum
- Population Density = 20 c / donum
- Population Density = 29 c / donum
- Population Density = 8 c / donum

Project Title :
Design Of Waste Wate Collection
System For Dora City

Created by :
Mohammed Jebreen
Noor Dodin
Project Supervisor :
Eng . Samah Al-Jabari

Coordinate System :Palestine_1923_Palestine_Grid
Projection: Cassini
Linear Unit: Meter
Data Source : Dora Municipality

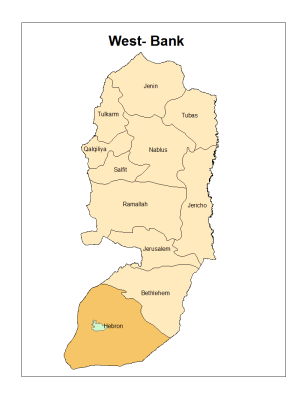
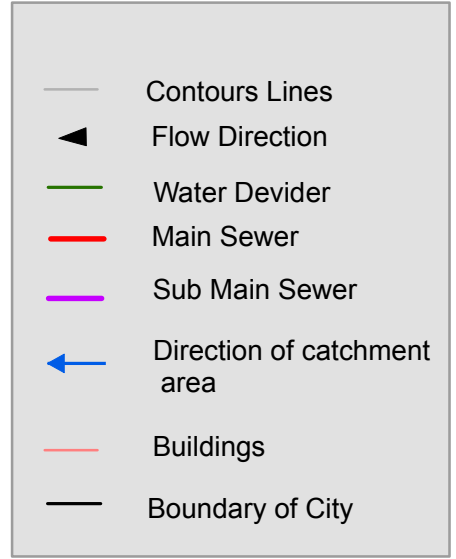


Figure Number (4.1)

Layout Of Waste Water Collection System For Dora City with Contours Line



Palestine Polytechnic University
College of Engineering and
Technology



Project Title :
Design Of Waste Water Collection
System For Dora City

Created by :
Mohammed Jebreen
Noor Dodin

Project Supervisor :
Eng . Samah Al-Jabari

Coordinate System :Palestine_1923_Palestine_Grid
Projection: Cassini

Linear Unit: Meter
Data Source : Dora Municipality

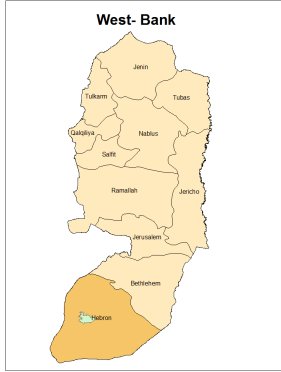
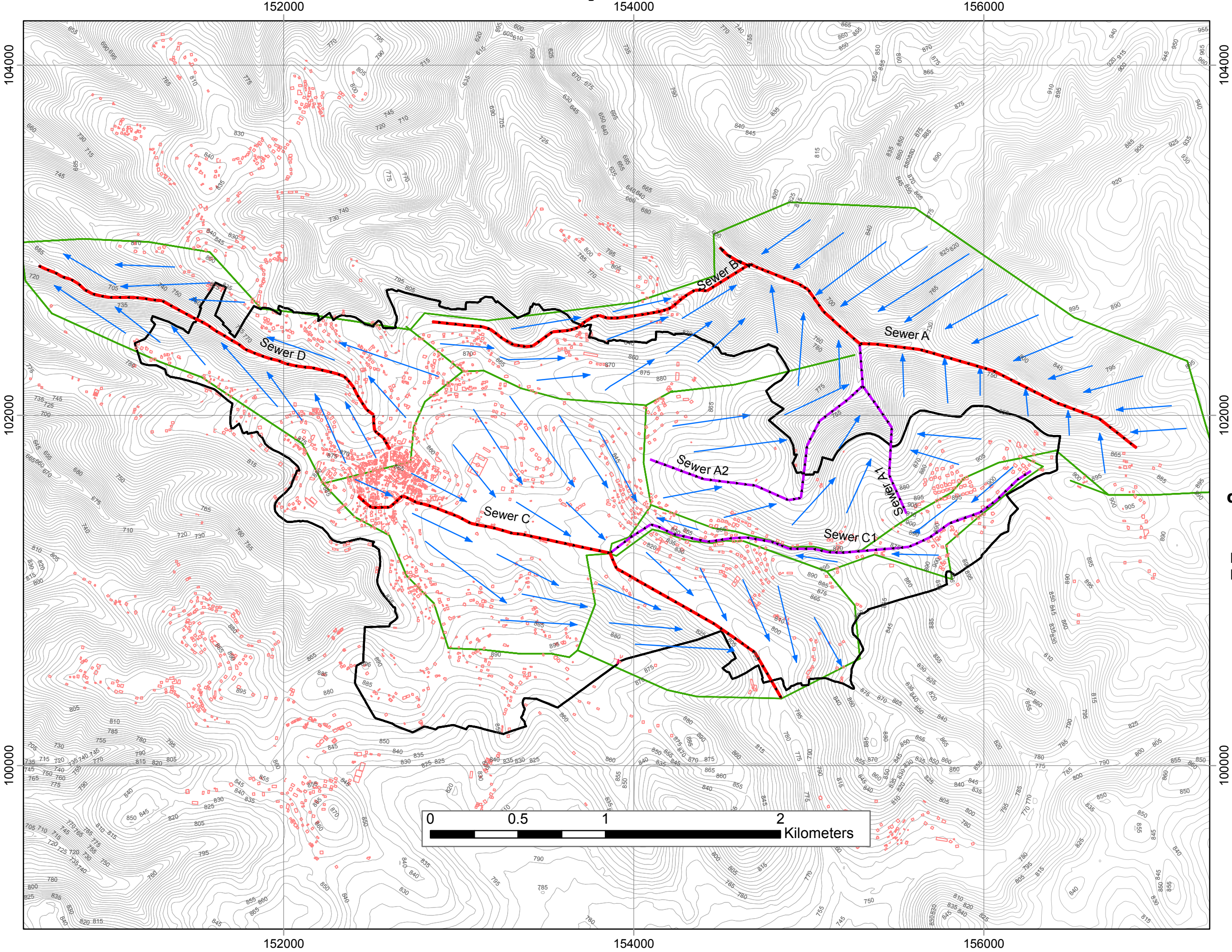


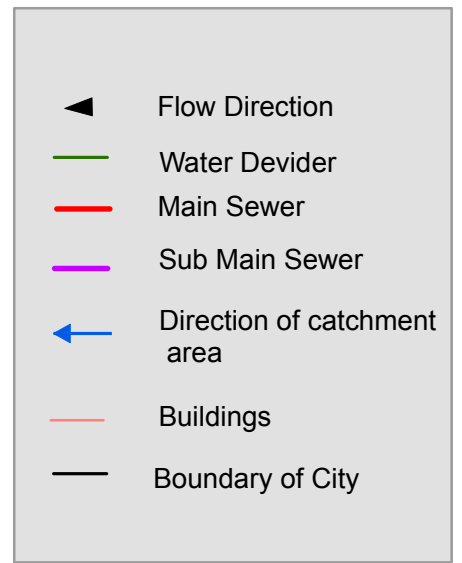
Figure Number (4.2)



Layout Of Waste Water Collection System For Dora City with out Contours Line



Palestine Polytechnic University
College of Engineering and
Technology



Project Title :
Design Of Waste Water Collection
System For Dora City

Created by :
Mohammed Jebreen
Noor Dodin

Project Supervisor :
Eng . Samah Al-Jabari

Coordinate System :Palestine_1923_Palestine_Grid
Projection: Cassini

Linear Unit: Meter
Data Source : Dora Municipality

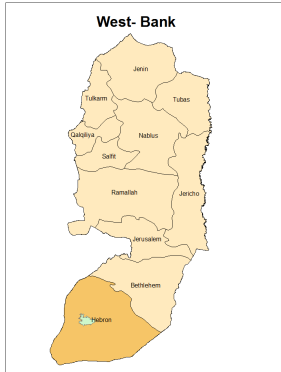
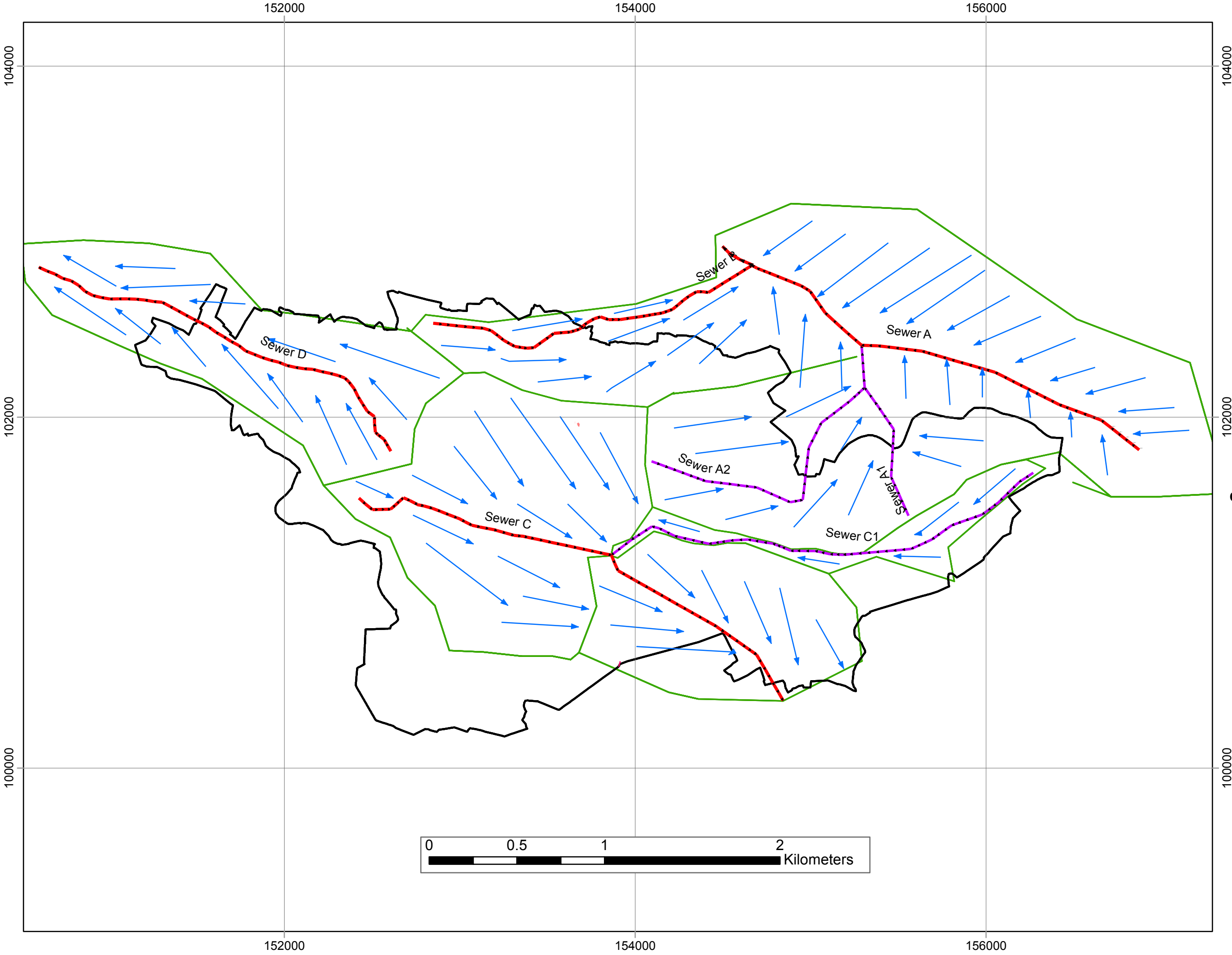


Figure Number (4.3)



Waste Water Layout ,Line D



Palestine Polytechnic University
College of Engineering and
Technology

Legend

—

Contours Lines

◀

Flow Direction

—

Water Devider

—

Sewer Line

←

Direction of catchment area

⊙

Manholes

—

Buildings

—

Boundary of City

—

Raods

Project Title :
Design Of Waste Wate Collection
System For Dora City

Created by :
Mohammed Jebreen
Noor Dodin

Project Supervisor :
Eng . Samah Al-Jabari

Coordinate System :Palestine_1923_Palestine_Grid
Projection: Cassini

Linear Unit: Meter
Data Source : Dora Municipality

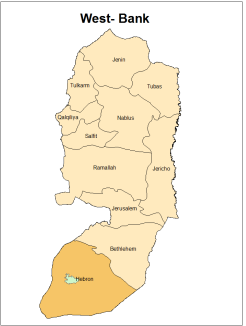


Figure Number (4.4)

